



The Dumont, London
Nine Elms SE1

GARTONJONES.COM

The Dumont, London

Nine Elms, SE1

GARTON JONES.COM

9 Albert
Embankment
London
SE1 7SP

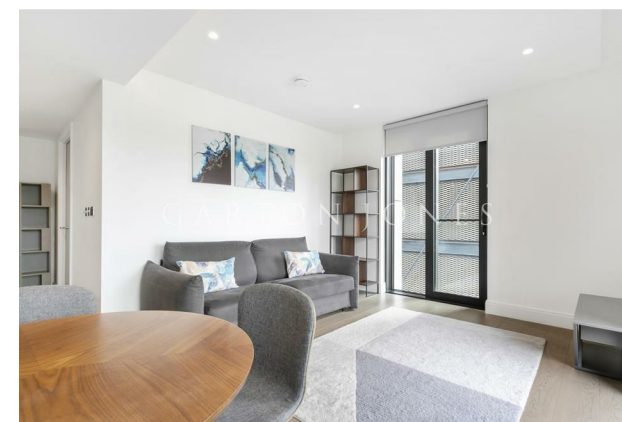
Lettings:
+44 (0) 20 7735 1888
nineelms@gartonjones.com
www.gartonjones.com

£1,100 Per Week

A stunning, direct River facing 2-bedroom apartment of approx. 815sq.ft (75.7sq.m) available to rent with parking available (via separate agreement) in The Dumont, a landmark development by St James, located on the banks of the River Thames between Lambeth & Vauxhall Bridge. This property further benefits from an open plan reception room with fully fitted interior designed kitchen, views of the River Thames, Big Ben, the Houses of Parliament and the City, 2 luxury bathrooms, a utility cupboard with good storage. Residents will also have exclusive access to a 19th floor Skyline Club Lounge, an extensive health and wellness suite offering spa treatments, a gymnasium with private training facilities and an indoor infinity pool plus a screening room, games room, billiards room and ten-pin bowling. Vauxhall Station is a short walk away offering the Victoria Line underground, Overground services, and bus links, all providing easy access into Central London.

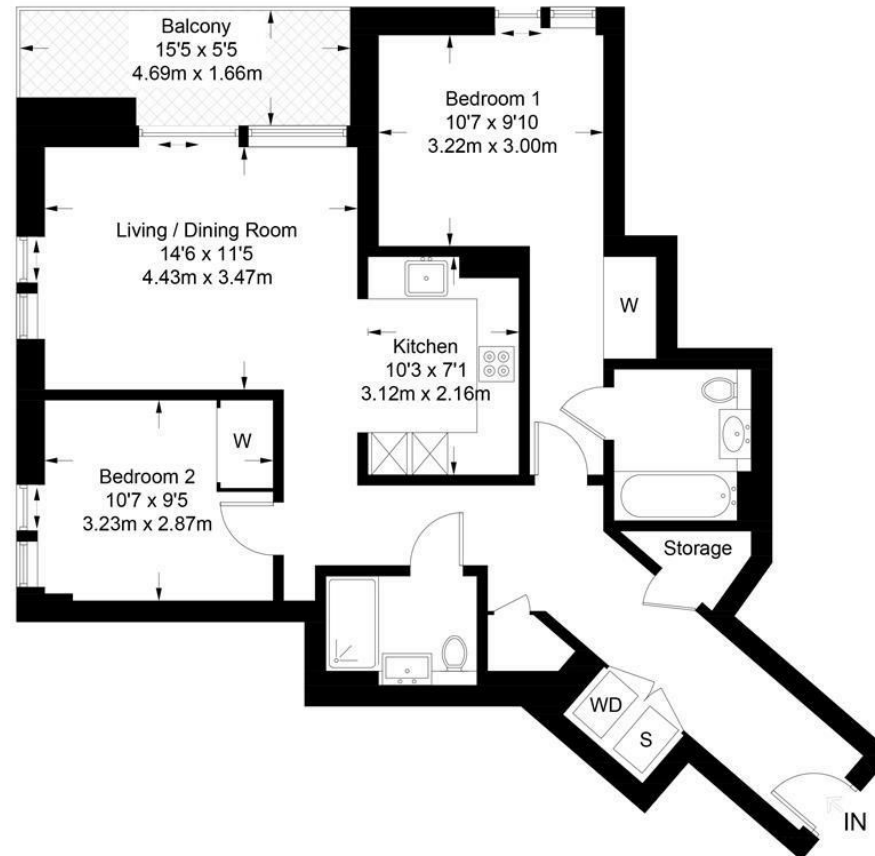
Lambeth Council Tax Band G - £2,936.50 per annum
12 Month Minimum Term
6 Week Security Deposit

- 815sq.ft (75.7sq.m)
- 2 Bedrooms
- Direct River Views
- Secure Parking (via Separate Agreement)
- 24 Hour Concierge
- Residents Gym
- Swimming Pool, Sauna, Steam Room & Spa Facilities
- 19th Floor Residents Bar & Lounge
- Cinema Screening Room & Bowling Alley
- 0.4 Miles to Vauxhall Station



The Dumont

Approximate Gross Internal Area = 815 sq ft / 75.7 sq m



Not to scale, for guidance only and must not be relied upon as a statement of fact.
All measurements and areas are approximate only and have been prepared in accordance with the current edition of the RICS Code of Measuring Practice.

